

Florida

Tomatoes & Citrus

May 13, 2011

Immigration Reform:

Implications for Farmers, Farm Workers, and
Communities

UC-DC Center, Washington D.C.

Fritz Roka

University of Florida - SWFREC

Tomatoes

Vegetable Acreage

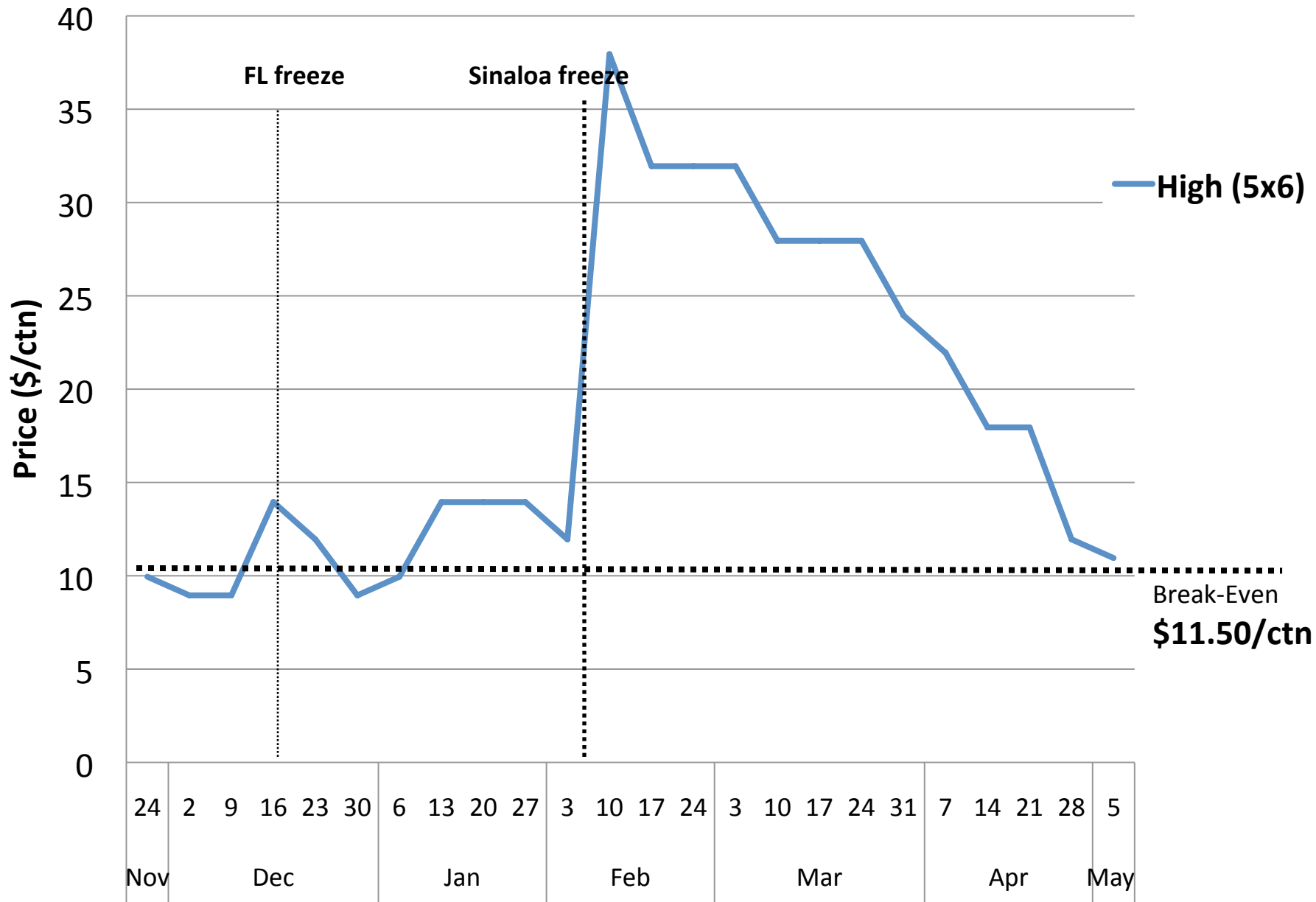
	1995	2010	% change
Total (state-wide)	208,050	201,000	-3%
Tomatoes*	49,000	32,000	-35%
Sweet corn	39,600	45,000	+14%
Snap beans	33,000	36,400	+10%
Bell peppers	21,000	18,800	-10%
Cucumbers	13,800	12,000	-7%

* Mature green varieties

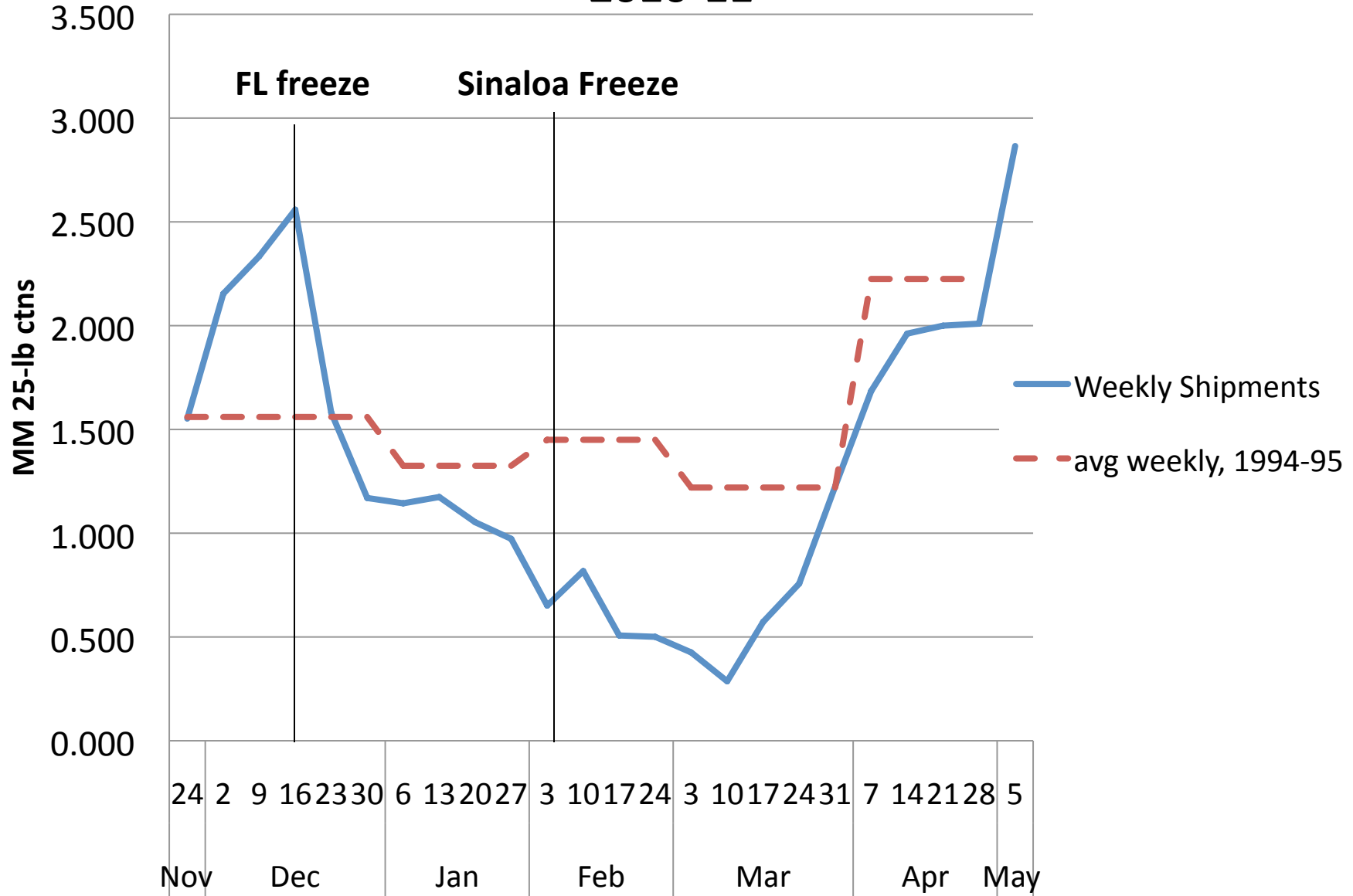
Diversification within Southwest Florida

- Within tomato types:
 - 1995: 19,000 ac 85% MG, 15% other
 - 2010: 20,000 ac 60% MG, 40% grapes,
cherries, romas
- Among other crops:
 - beans
 - sweet corn
 - “hot” pepper
 - organics

S.Fla MG Tomato Ship Pt Prices (2010-11)



Tomato (MG) Weekly Shipments 2010-11



Freezes in Southwest FL

	Unit	Jan 2010	Dec 2010
Total vegetable acreage	ac	78,700	78,700
Est. acreage lost @ harvest	ac	16,580	20,000
percent of total	%	21%	25%
affected tomato (MG)	%	15-20%	50-60%
Grower losses (est)	\$M	\$140	\$158
Farm Worker losses (est)	\$M	\$36	\$39
Non-ag sector (est)	\$M	\$20	\$26
Total losses (est)	\$M	\$196	\$224

Challenges to Vegetable Production

- Food safety (GAPs)
- BMPs
- Labor

Documentation

Citrus

Sweet Orange Production & Acreage

Season	Production (MM box)	Bearing acreage (1,000 ac)
2009	133.6	451
2008	162.5	459
2007	170.2	464
2006	129.0	476
2005	147.7	491
2004	149.8	542
2003	242.0	565
2002	203.0	587
2001	230.0	587
2000	223.2	605

Citrus Greening (HLB)

- Bacterial infection (phloem)
- Vectored by psyllid
- First appearances:
 - 1998, psyllid
 - 2005, HLB confirmed
- Standard protocol:
control- scout- eradicate
- Challenges to standard protocol:
 - Psyllid endemic / alternative host plants
 - Latency period
 - Infected mature tree productive, 4-6 yrs
 - Success requires everyone

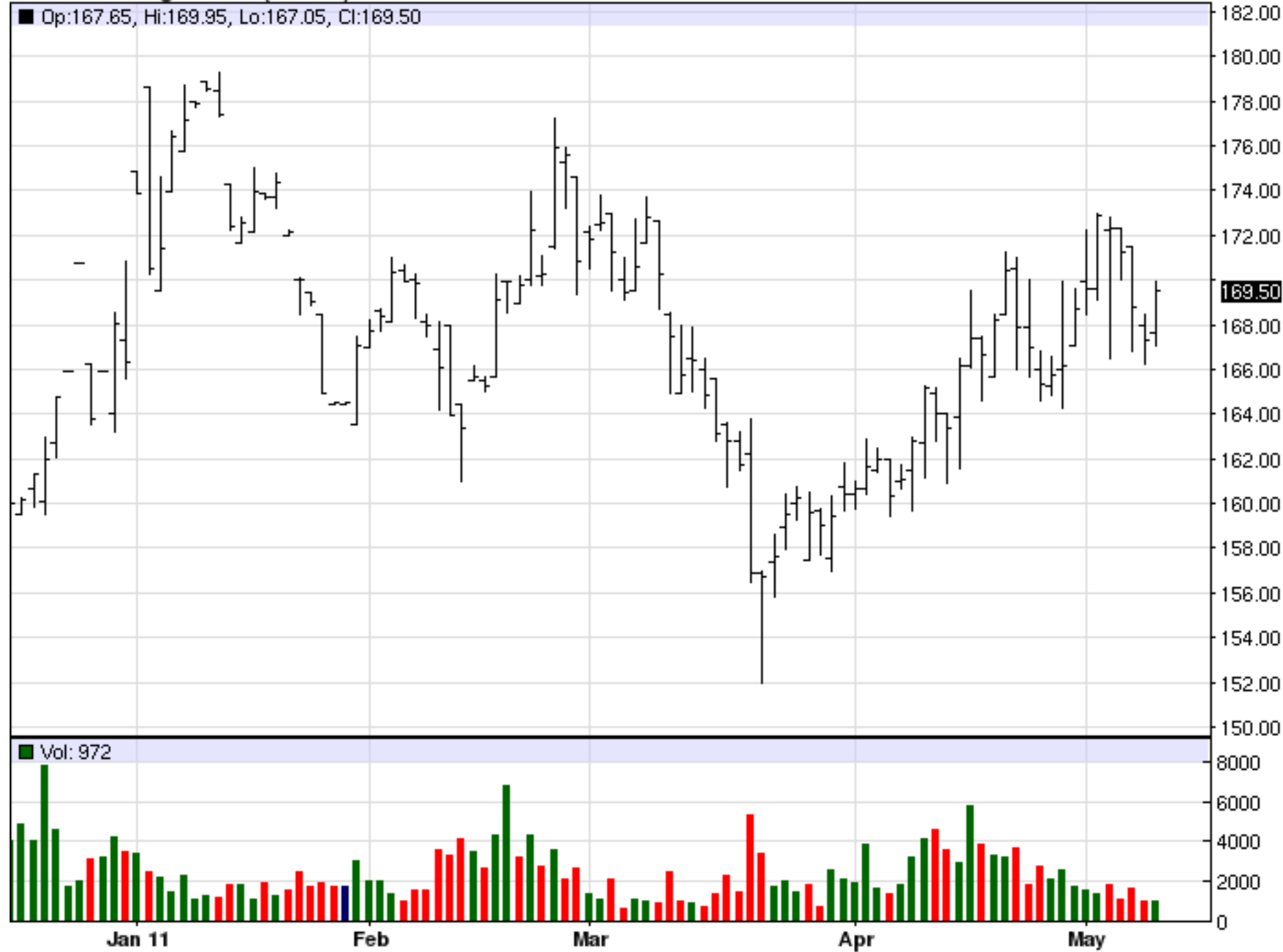


Financial Impacts of Citrus Greening

	Units	2003-04	2009-10	% change
Cost, cultural care	\$/ac	\$768	\$1,561	+ 103%
Expected yield	box/ac	516	458	- 11%
Break-even price	\$/p.s.	\$0.80	\$1.13	+ 41%

Source: Muraro, R.P. <http://crec.ifas.ufl/extension>

OJN11 - Orange Juice (ICEUS)





← February 2008

February 2011 →

Trt 2

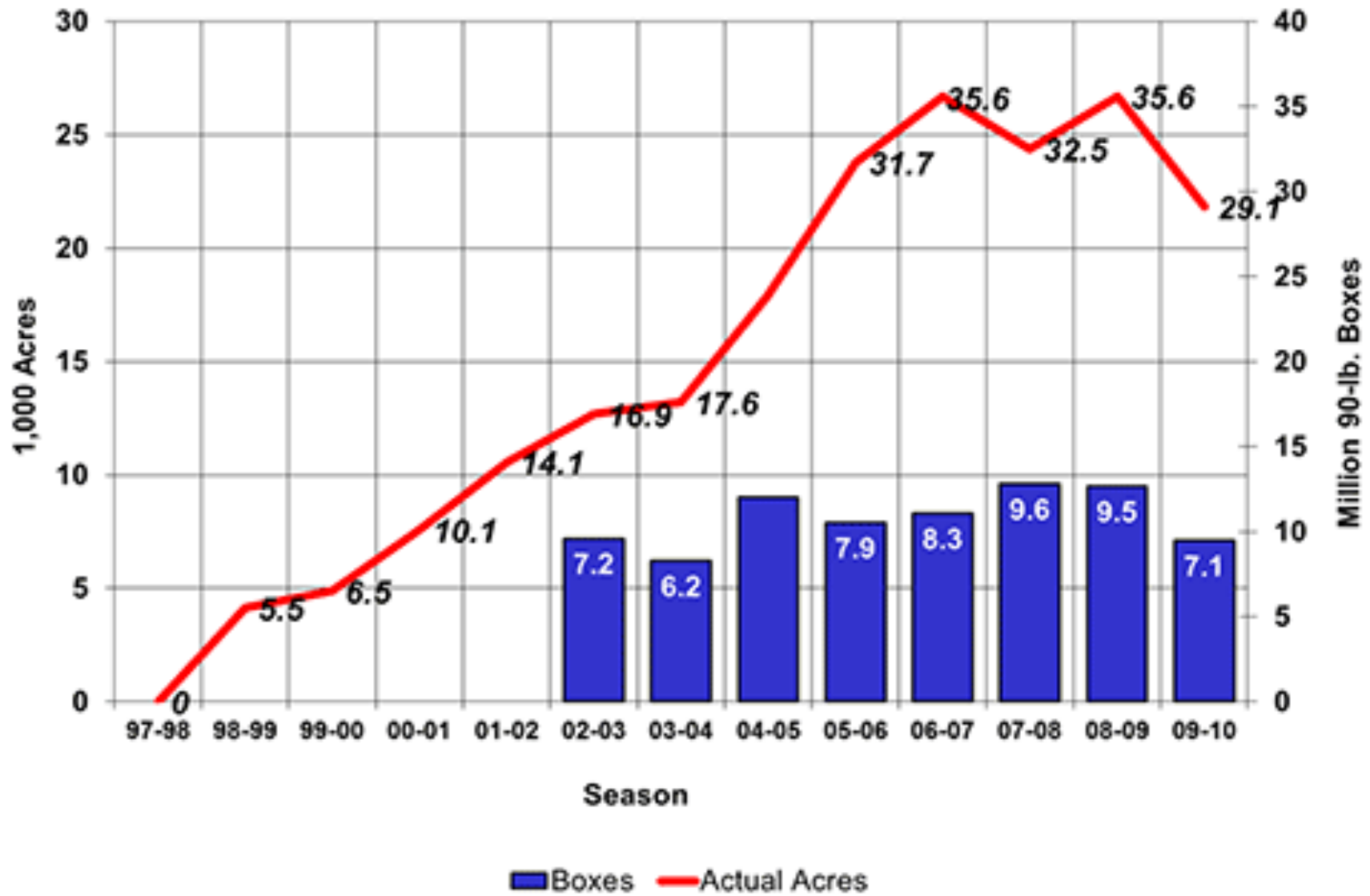
Micronutrients + K-Phite
+ (13-0-44, Oil, H₂O₂)



Reasons for MH



Mechanically Harvested Acres and Boxes



Citrus Mechanical Harvesting

- Losing Momentum
 - grower concern about tree damage
 - processor concern about debris
 - little improvements to equipment
- Abscission (CMNP)
 - possible solution
 - EPA registration delay
- Plenty of workers (but concerns mounting)

Concluding comments

- FL citrus & veg industries remain highly dependent on seasonal workers
 - Mechanization possible with juice oranges, but slow adoption
 - NO mechanical innovations possible with most fresh vegetable harvest
- Strong anti-illegal immigrant sentiment in FL
- FL min wage \$7.31 (Jun 1st)

Thank you.

Questions

Florida H-2A Workers

Season		Requested	Certified
2010-11		5,504	4,740
	Citrus	4,068	3,844
	Vegetable	1,401	863
	Other	35	33
2009-10		7,506	5,690
2008-09		2,637	1,990
2007-08		6,297	5,594
2006-07		4,534	3,827